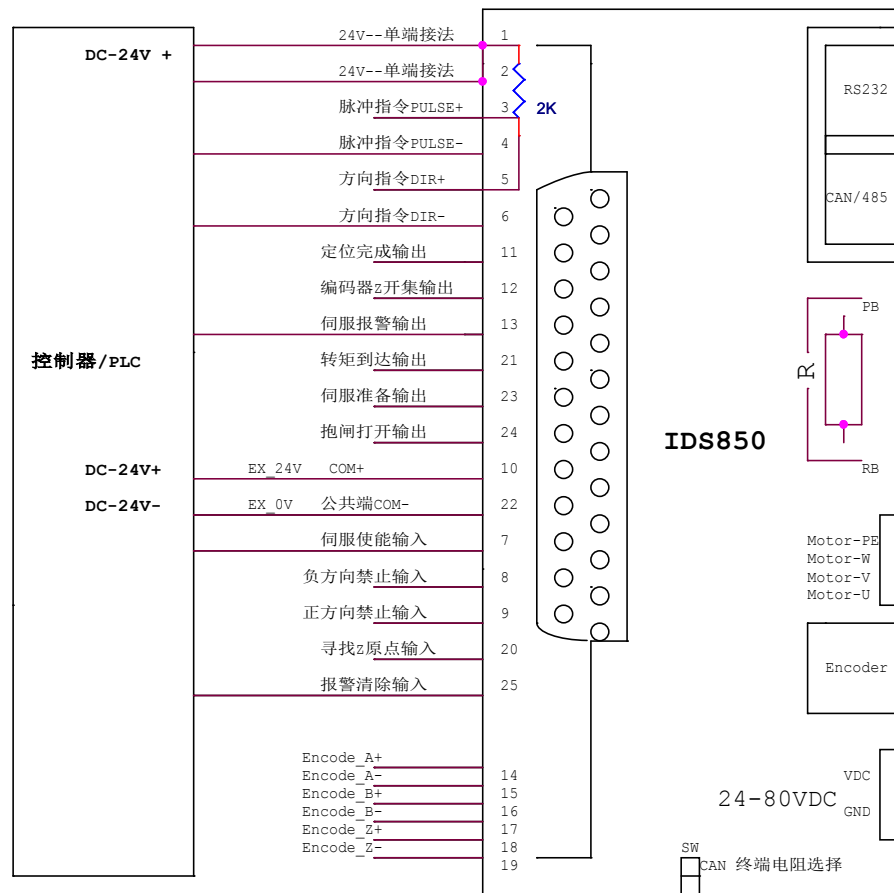
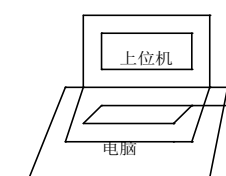
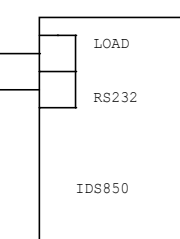
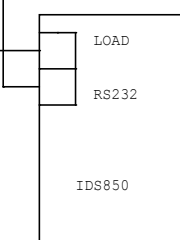
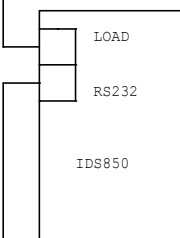
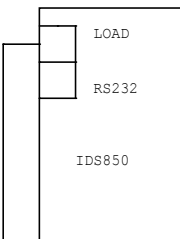
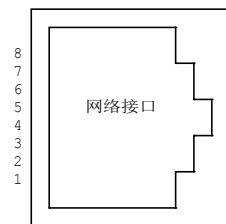


IDS850伺服驱动器接线图

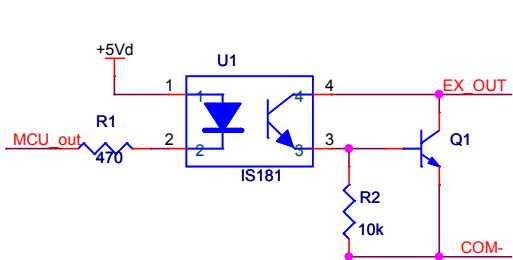
共阳极接法



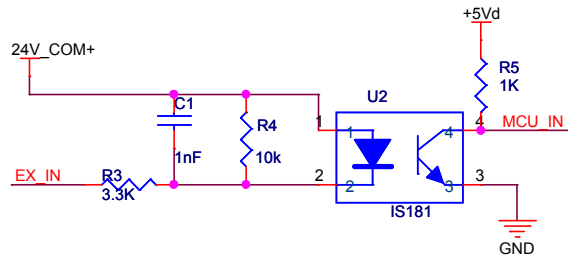
序号1: CAN_H
 序号2: CAN_L
 序号7: 485_B
 序号8: 485_A



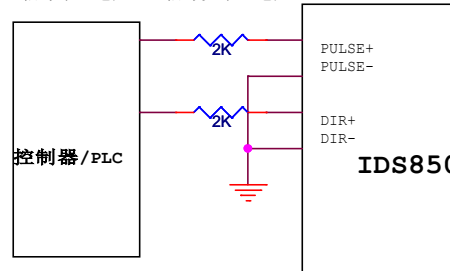
驱动器内部输出IO参考电路:



驱动器内部输入IO参考电路:



24V信号串2K电阻, 5V信号免串2K电阻



IDS850共阴极接法 (仅限于脉冲方向信号)